

# Port-O-Lif



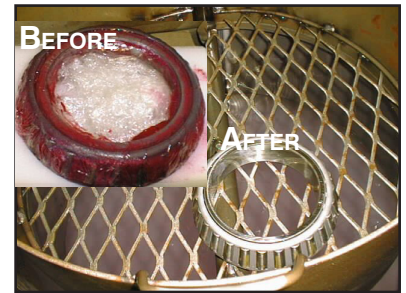
TURN ANY DRUM INTO AN AGITATING PARTS WASHER.



**THE** Magnus® Port-O-Lif easily converts most still tanks or any 55 or 30 gallon open head drum into a highly efficient, mechanically agitated cleaning machine ... and it runs on compressed air!

## ADVANTAGES:

- The rapid agitation in the cleaning solution cleans parts more thoroughly than still tanks.
- Helps eliminate scrubbing parts by hand.
- Cleans up to 75 lbs. at one time.
- Operates on compressed air - no electric motors, gears, or linkage to cause trouble.
- No solution pumps or nozzles to clog.
- Frees workers for other production duties.



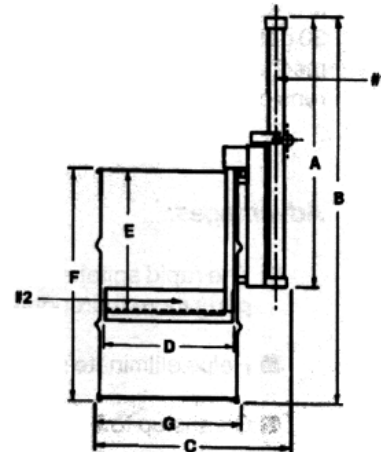
| MACHINE DIMENSIONS |   |        |        |
|--------------------|---|--------|--------|
| GALLONS:           |   | 30     | 55     |
| Cylinder Height    | A | 41.00" | 41.00" |
| Overall Height     | B | 52.75" | 59.50" |
| Overall Width      | C | 26.50" | 29.75" |
| Platform Diameter  | D | 15.00" | 19.50" |
| Dipping Depth      | E | 20.50" | 20.50" |
| Barrel Height      | F | 28.25" | 35.00" |
| Barrel Diameter    | G | 18.50" | 22.75" |

| SERVICE CONNECTIONS   |  |       |       |
|-----------------------|--|-------|-------|
| Air Consumption (CFM) |  | 2-4   | 2-4   |
| Air Inlet (NPT)       |  | 0.25" | 0.25" |

| GENERAL DATA                   |  |     |     |
|--------------------------------|--|-----|-----|
| Load Capacity @ 90 PSI         |  | 75  | 75  |
| Shipping Weight (approx. lbs.) |  | 110 | 110 |

| AGITATION DATA (See Note 1)     |  |           |           |
|---------------------------------|--|-----------|-----------|
| Strokes (per min.) (See Note 2) |  | 140-180   | 140-180   |
| Stroke Length                   |  | 1.5"-2.5" | 1.5"-2.5" |

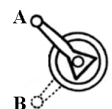
| NOTES |   |  |  |
|-------|---|--|--|
| 1.    | The data shown is typical and may vary with air pressure, load weight, and shape. |  |  |
| 2.    | Stroke equals travel in one direction.  |  |  |



| Part Numbers |           |                                     |  |
|--------------|-----------|-------------------------------------|--|
| #1           | 9706-1501 | Port-O-Lif Device                   |  |
| #2           | 9706-6055 | 55 gal. Drum Carrier & Mounting Kit |  |
| #3           | 9701-1068 | Maintenance Kit (Optional)          |  |
| #2           | 9706-6013 | 30 gal. Drum Carrier                |  |
| #2           | 9706-7573 | Tank Carrier                        |  |

### Two Operations with One Control

Two Positions of the Operating Lever



Position A: Used for **RAISING** the work from the solution to the top of the container.

Position B: Used for **AGITATING** the work in the cleaning solution.